

# 0247 SERIES



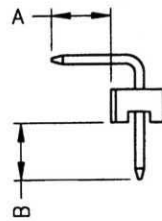
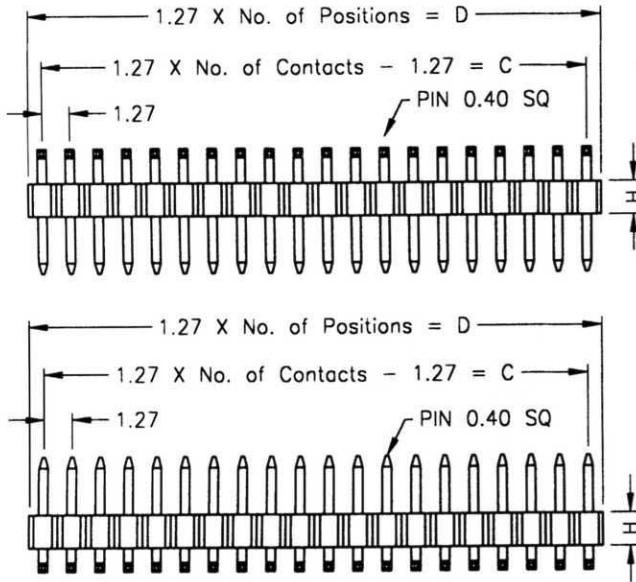
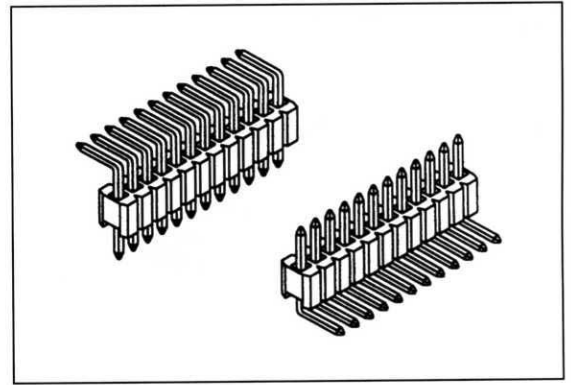
1.27mm(0.05"), 0.4mm Square Pin, Pin Header, Single Row, Right Angle

### Specifications

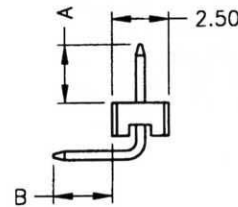
Current Rating: 1Ampere  
 Insulation Resistance: 500MΩ Min.  
 Dielectric Withstanding: 300V AC  
 Contact Resistance: 20mΩ Max.  
 Operating Temperature: -40°C to +105°C

### Materials

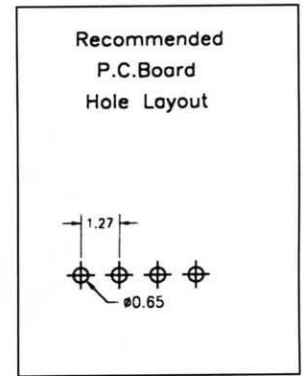
Contact Material: Phosphor Bronze  
 Contact Plating: Gold/Tin over Nickel  
 Insulator: Glass Filled Polyester (UL 94V-0)



R1 TYPE



R2 TYPE



No. of Pins/Row	Dimension Information		No. of Pins/Row	Dimension Information		No. of Pins/Row	Dimension Information		No. of Pins/Row	Dimension Information	
	C	D		C	D		C	D		C	D
03	2.54	3.81	10	11.43	12.70	17	20.32	21.59	24	29.21	30.48
04	3.81	5.08	11	12.70	13.97	18	21.59	22.86	25	30.48	31.75
05	5.08	6.35	12	13.97	15.24	19	22.86	24.13	26	31.75	33.02
06	6.35	7.62	13	15.24	16.51	20	24.13	25.40	27	33.02	34.29
07	7.62	8.89	14	16.51	17.78	21	25.40	26.67	28	34.29	35.56
08	8.89	10.16	15	17.78	19.05	22	26.67	27.94	29	35.56	36.83
09	10.16	11.43	16	19.05	20.32	23	27.94	29.21	30	36.83	38.10

## Ordering Information

0247 - X                      XX -                      XX 0

1: Tin                              00: H=1.0mm                      Position  
 2: Gold                           01: H=1.50mm  
 3: Half Gold                    03: H=2.00mm